

Instructions for Installing Zip eForms into OSCAR

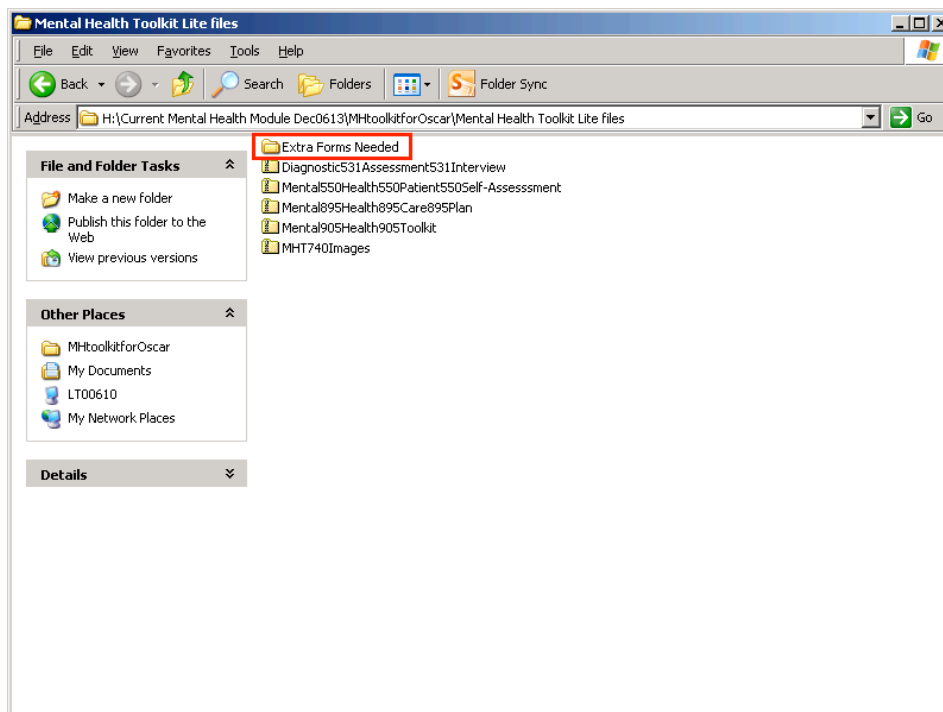
This document contains the instructions for importing eForms that are Zipped, into OSCAR. Zip files contain html, png, and js files, that are required to enable full functionality of the eForm. Using the import function allows easy installation as all necessary files are placed in their appropriate libraries (eForm library, image library), and are properly named. This is vital, as the latest eForms are linked to other eForms and naming conventions allow this linkage to work.

Thanks to Pauline Dan, PITO, for creating the screenshots that demonstrate this process. The following is adapted from the instructions for installing the “Mental Health Toolkit Lite” into OSCAR.

A. Assemble zip file(s) required for importing.

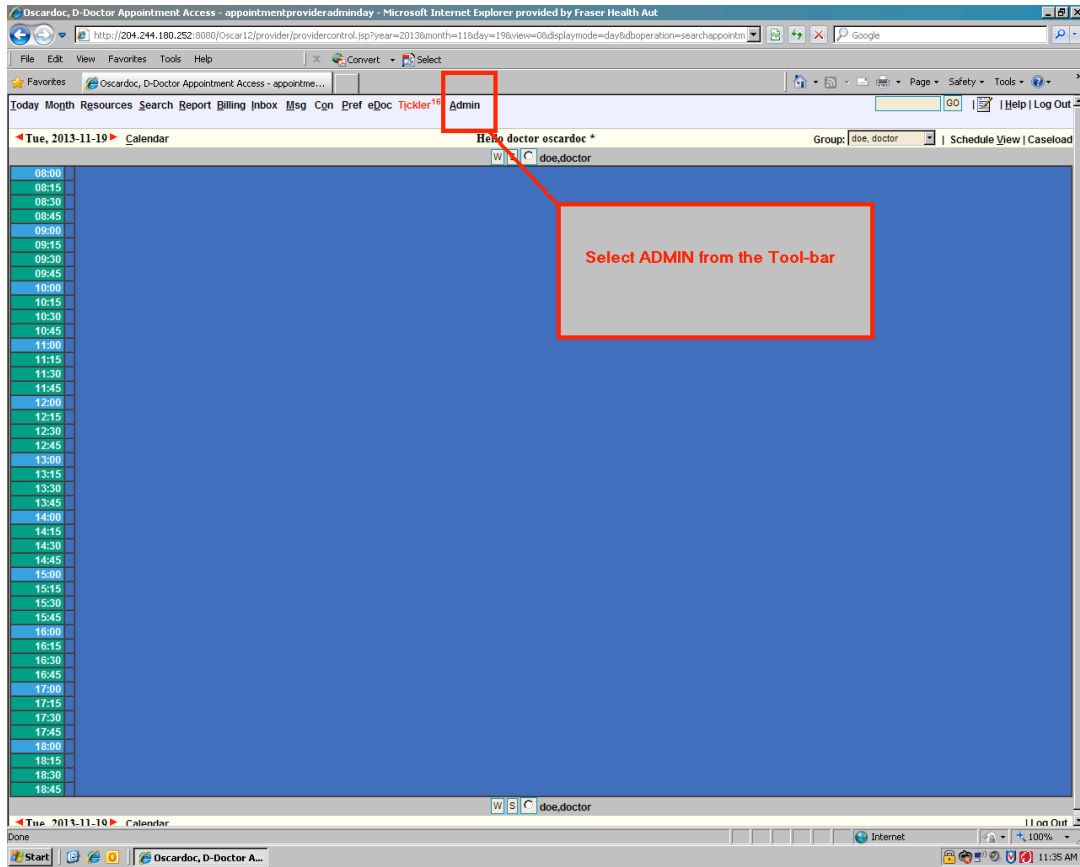
1. Zip files may be found on the Oscar Canada User Society (OCUS) site (<http://oscarcanada.org/oscar-users/emr-resource/eform>), PSP courses, or fellow Oscar users who wish to share their personal eForms.
2. Ensure all zip files are in easy to find location, e.g. desktop. Simple eForms may have a single zip file. More complex forms, e.g. the Mental Health Tool Kit, may consist of multiple files, all will be needed.
3. Some forms may already exist in your eForm and image libraries. This will generate a warning message, which usually can be ignored. However, if the new zip files is an update of an older eForm, the older eForm needs to be archived, renamed, or deleted, to allow for the new eForm to be uploaded. If unsure, ask OSP or colleague for assistance.
4. Example: the Mental Health Toolkit consists of 5 main zip files, and another folder with additional zip files:
 - Mental Health Toolkit
 - MHT Images
 - Mental Health Patient Self -Assessment
 - Mental Health Care Plan
 - Diagnostic Assessment Interview
 - Extra forms needed

Each zip file must be “imported” separately.

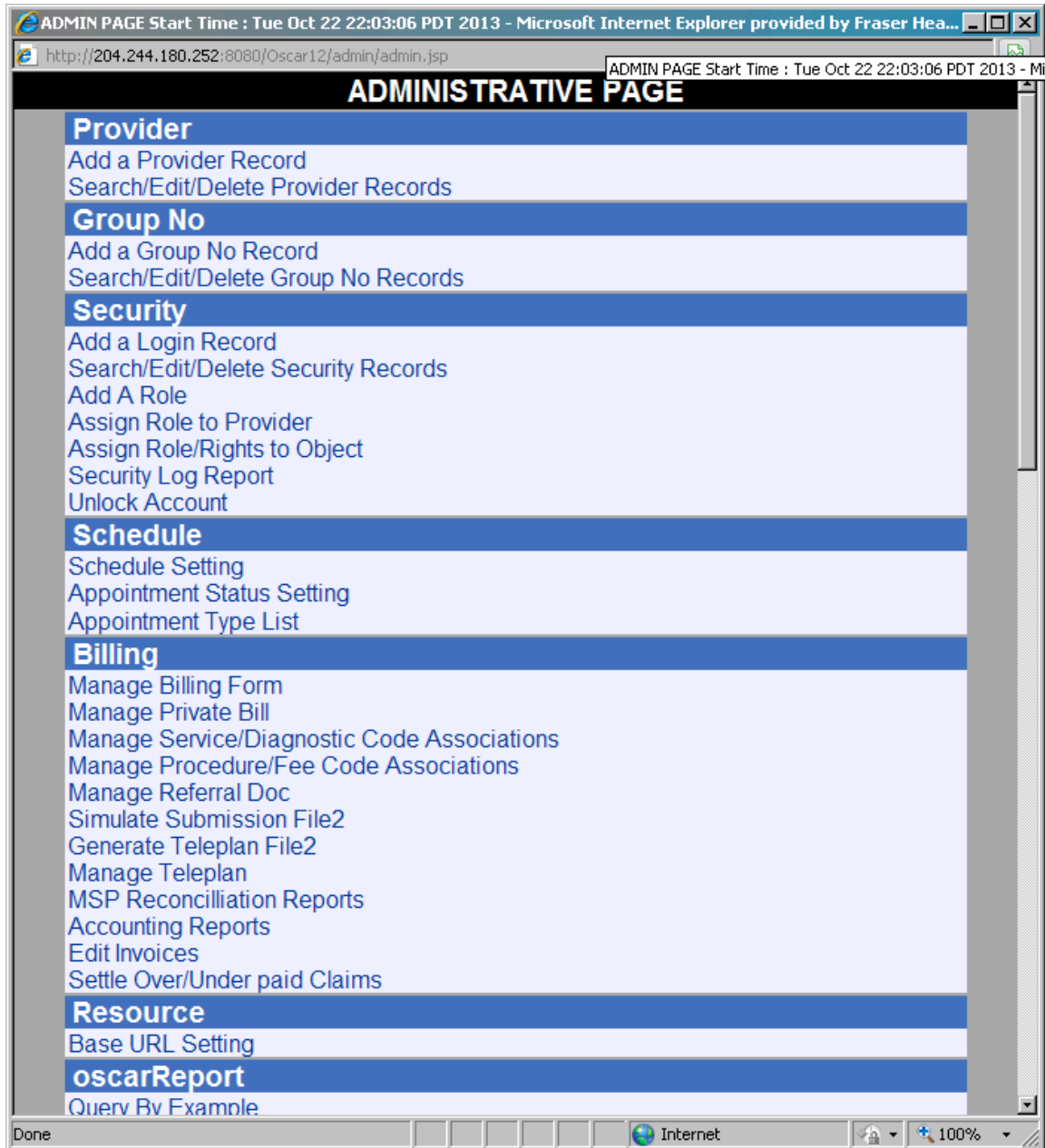


B. Import into OSCAR

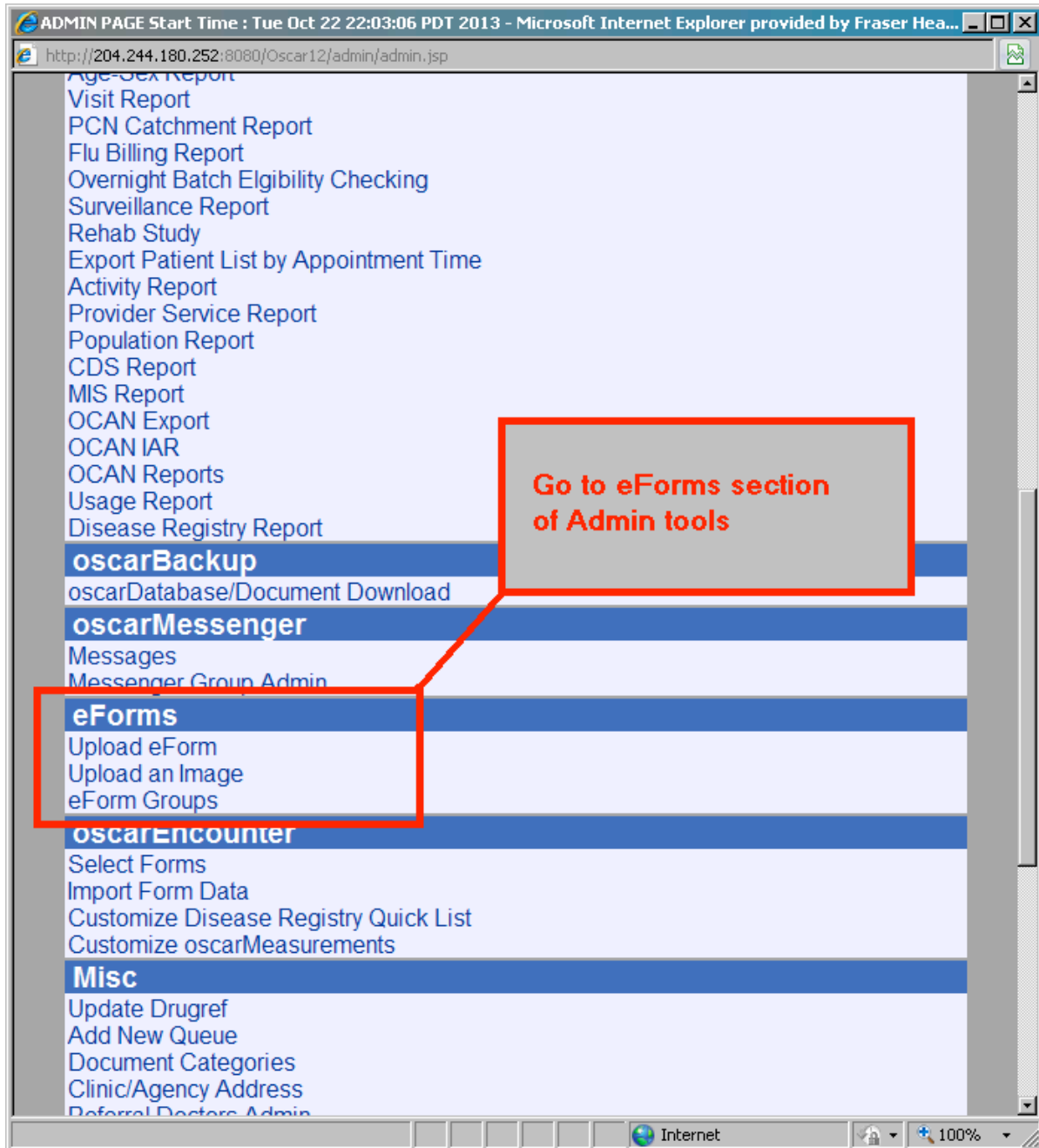
In Oscar, go to the Admin tab on the Menu-bar:



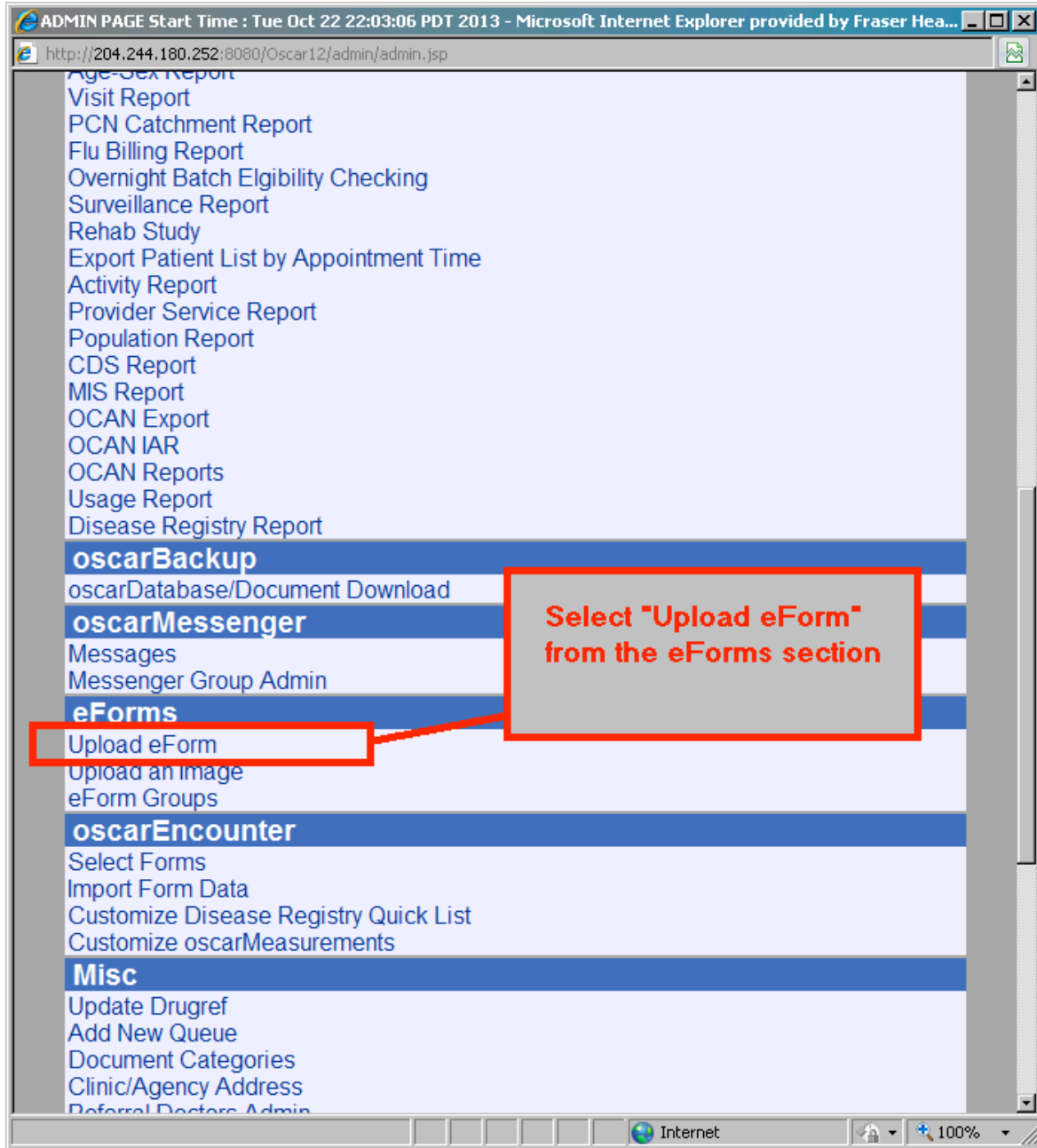
The Admin window will open:



Go to the section called E-Forms:



Select "Upload eForm":



The Upload eForms window will open. Then click the "Import eForm" tab:

Upload eForm

Upload New eForm **Import eForm** Create In Editor Download eForms eForm Generator

eForm name: Additional Information:

eForm role type :

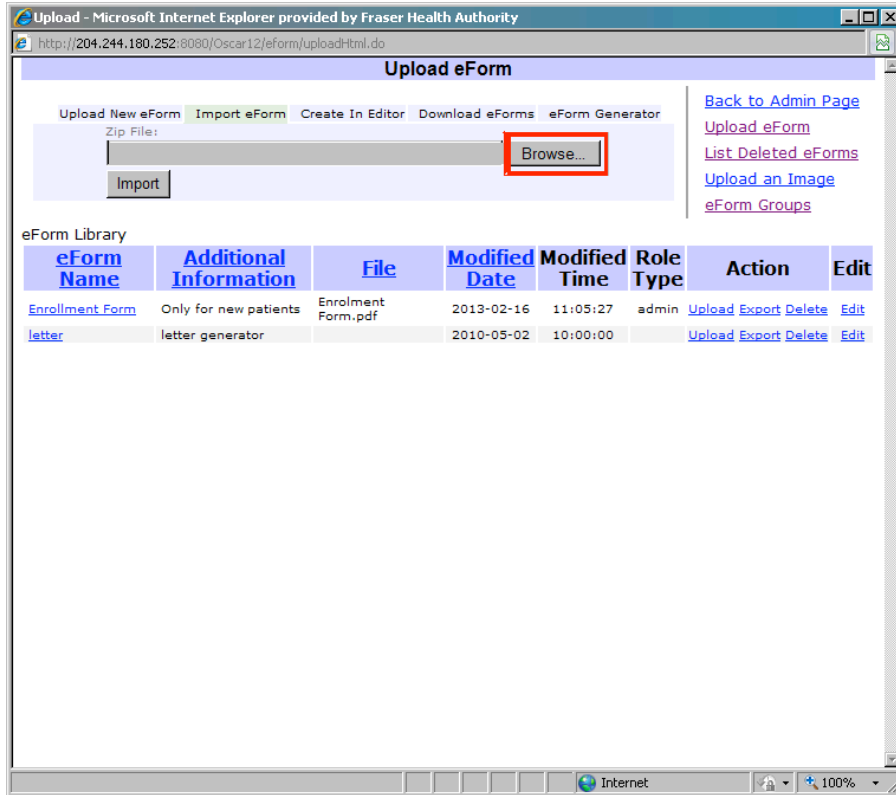
Patient Independent

[Back to Admin Page](#)
[Upload eForm](#)
[List Deleted eForms](#)
[Upload an Image](#)
[eForm Groups](#)

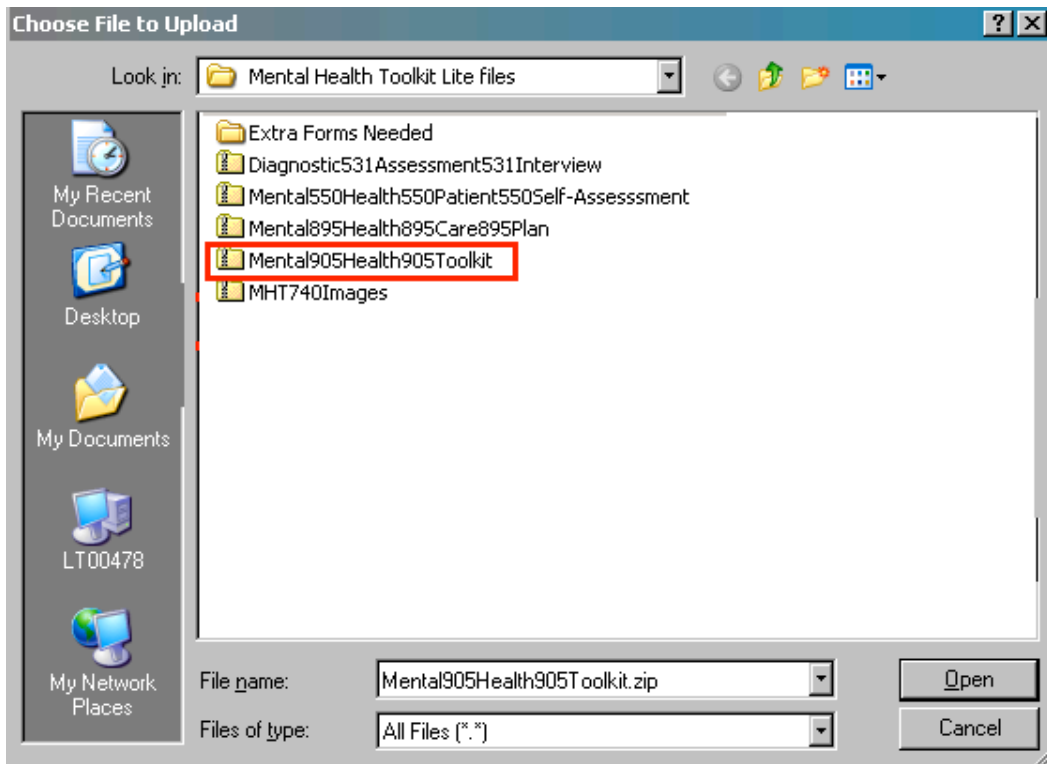
eForm Library

eForm Name	Additional Information	File	Modified Date	Modified Time	Role Type	Action	Edit
Enrollment Form	Only for new patients	Enrolment Form.pdf	2013-02-16	11:05:27	admin	Upload Export Delete	Edit
letter	letter generator		2010-05-02	10:00:00		Upload Export Delete	Edit

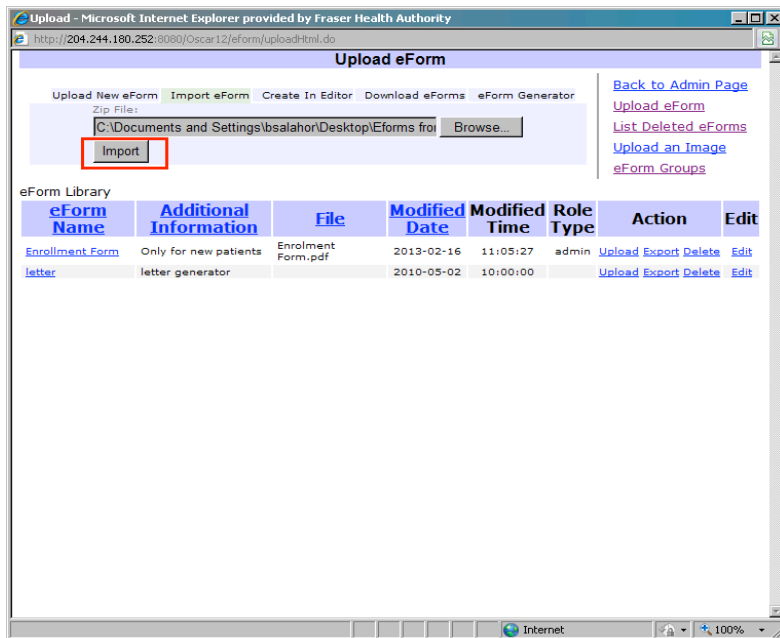
This screen will open. Select the “Browse...” button:



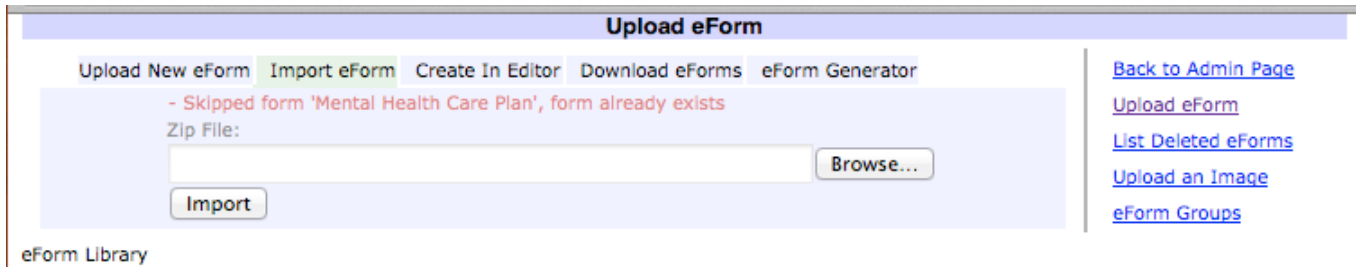
Use the Windows browser to go to the location where the zip files are saved and select the desired file (in this example, it is “Mental905Health905Toolkit.zip”):



Select OPEN. The “Choose File to Upload” window will close, and you will be returned to the eForm Upload window shown below. Then select “IMPORT” button and the form will be uploaded into OSCAR..



Repeat this “Import eForm” cycle for the other zip files you need. Simply click “Browse” again and navigate to where the other files are stored, and import all the necessary files. If some files already exist, you may see a warning message such as this:



In general, these warnings can be ignored. Certain image (png) may be re-used from existing eForms. Certain javascript (js) files may be in use already. Any referenced png file will match with the current eForm and should not generate an error. As a rule, DO NOT DELETE any image files from the image library. These are required for older eForms to display properly, even if the eForm is now obsolete. eForm files can be deleted, but leave the image library intact. If unsure, as your OSP or colleague for advice.

A successful import will place the new eForm at the top of your Upload eForm list.